

# GOVT. POSTGRADUATE COLLEGE, GUNA

Affiliated to Jiwaji University, Gwalior (M.P.)

Phone No.: 07542-251641

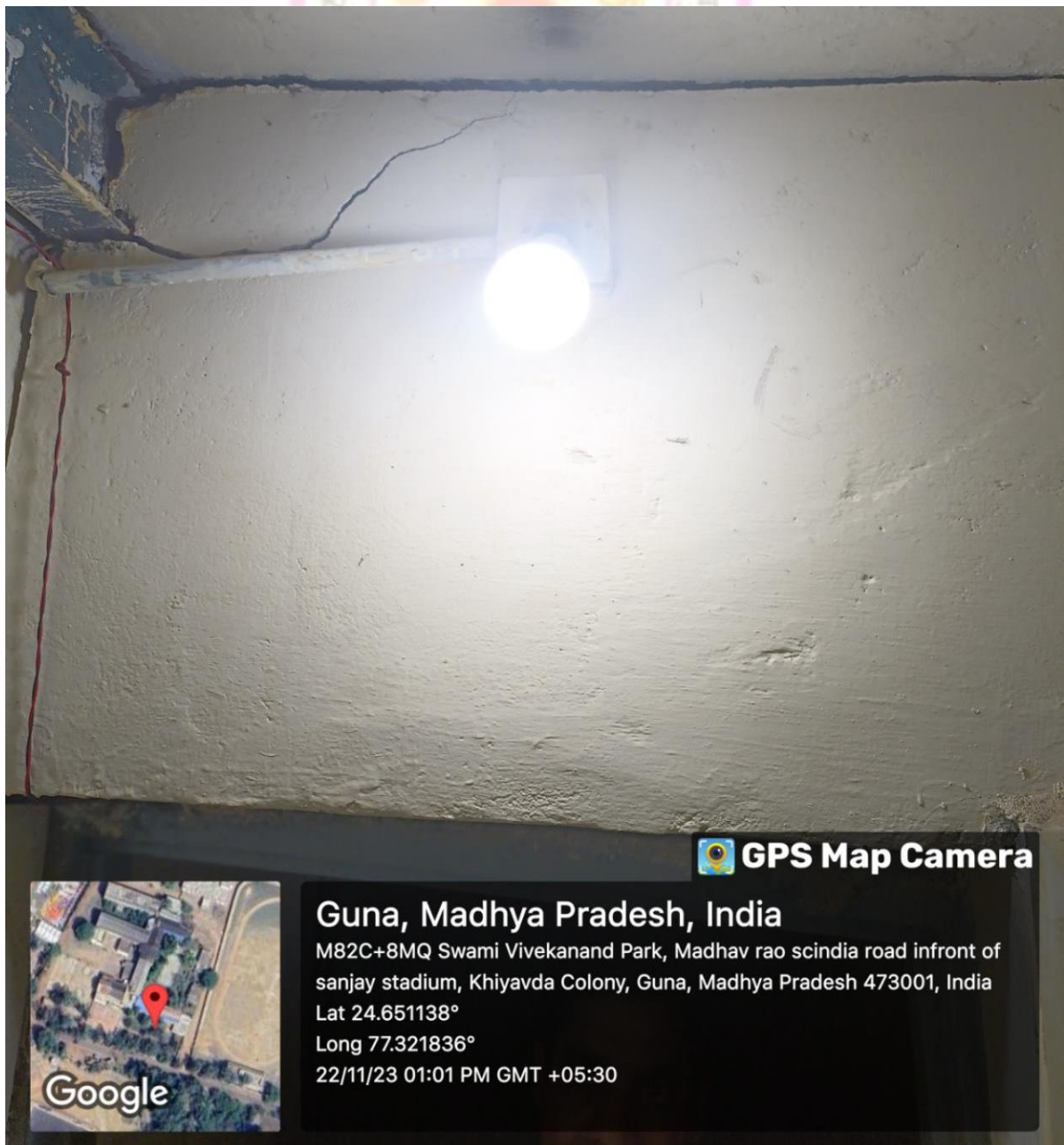
Email : hegpgcgun@mp.gov.in

Website : <https://pgcollegeguna.in/>



## 1. Alternate sources of energy and energy conservation measures

### Use of LED



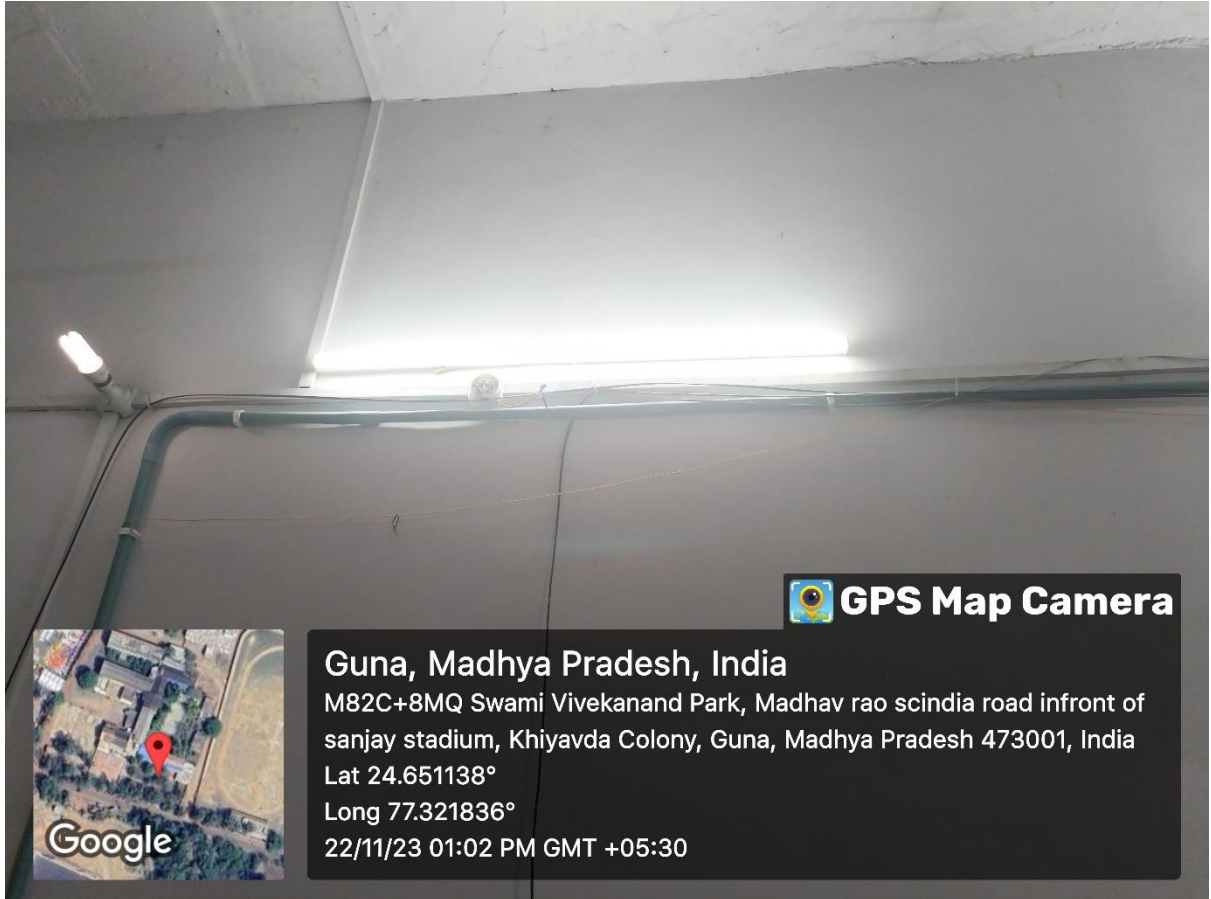
# GOVT. POSTGRADUATE COLLEGE, GUNA

Affiliated to Jiwaji University, Gwalior (M.P.)

Phone No.: 07542-251641

Email : [hegpgcgun@mp.gov.in](mailto:hegpgcgun@mp.gov.in)

Website : <https://pgcollegeguna.in/>



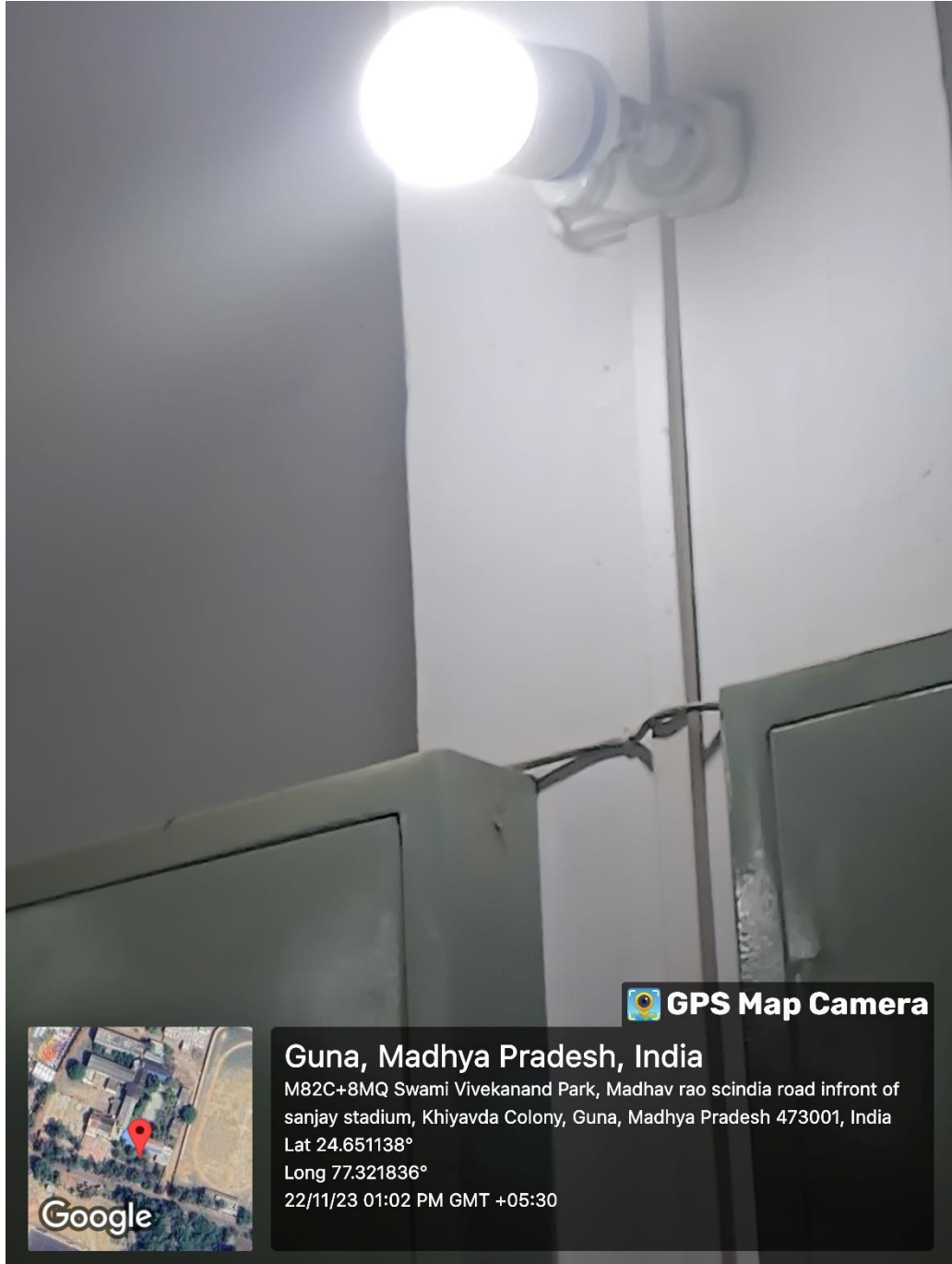
# GOVT. POSTGRADUATE COLLEGE, GUNA

Affiliated to Jiwaji University, Gwalior (M.P.)

Phone No.: 07542-251641

Email : [hepgcgun@mp.gov.in](mailto:hepgcgun@mp.gov.in)

Website : <https://pgcollegeguna.in/>





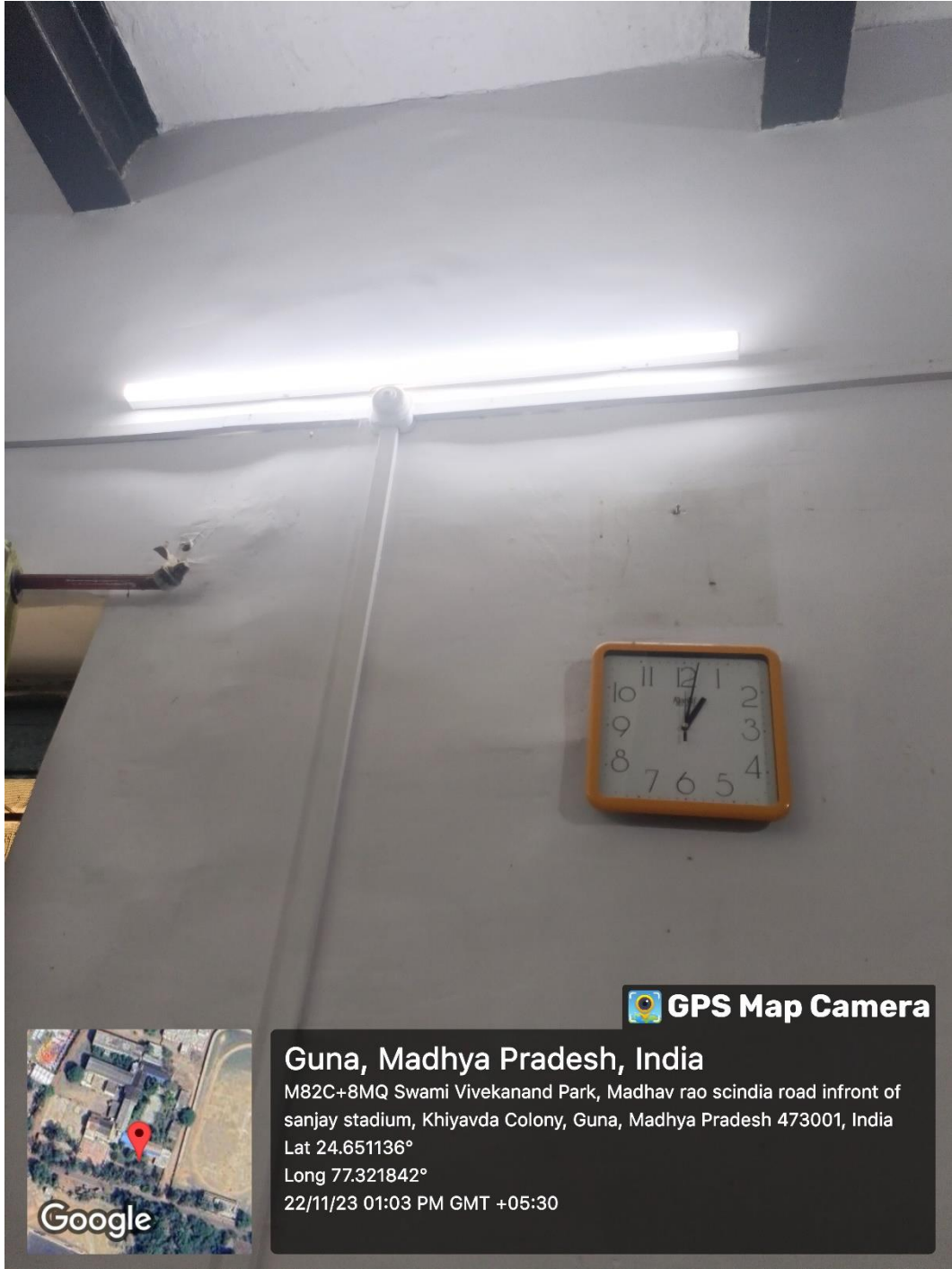
# GOVT. POSTGRADUATE COLLEGE, GUNA

Affiliated to Jiwaji University, Gwalior (M.P.)

Phone No.: 07542-251641

Email : [hepgcgun@mp.gov.in](mailto:hepgcgun@mp.gov.in)

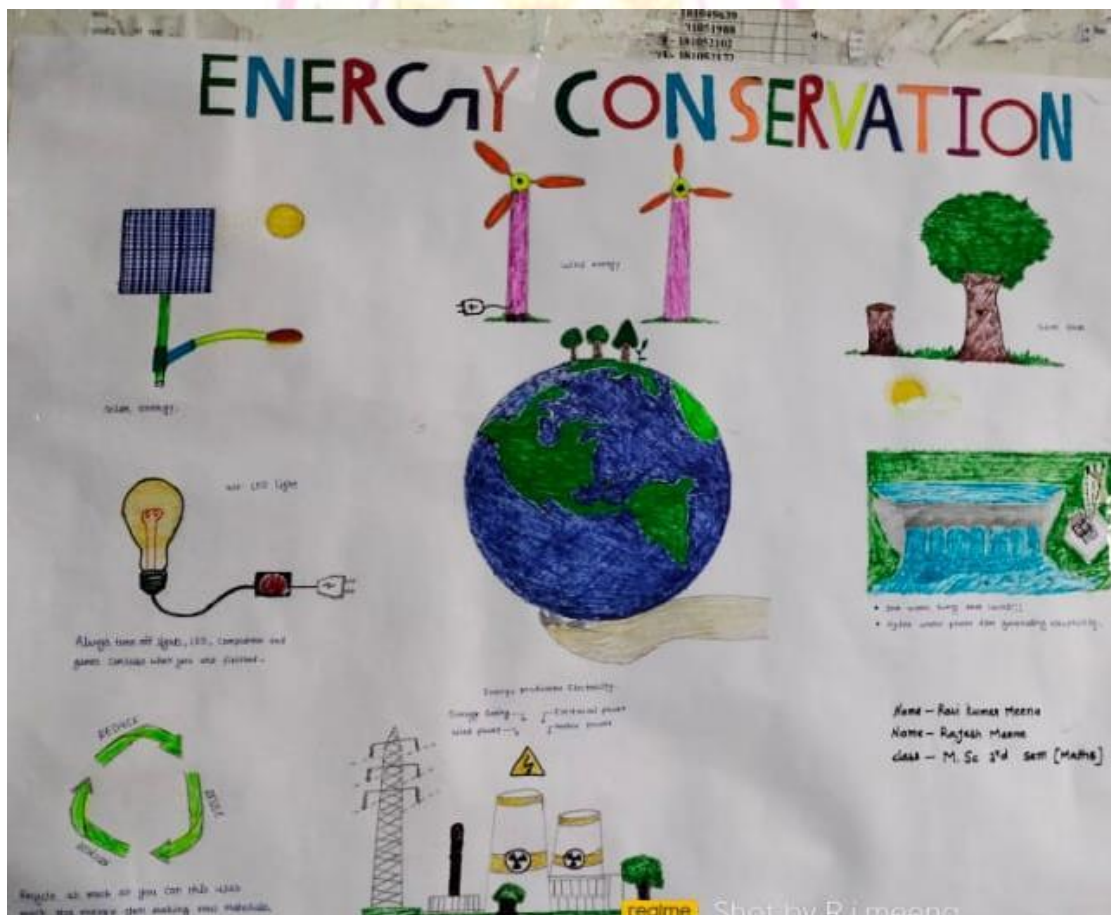
Website : <https://pgcollegeguna.in/>





## Poster Making Competition on Energy Conservation

Date : 20-08-2022



Govt PG College, Guna (MP)

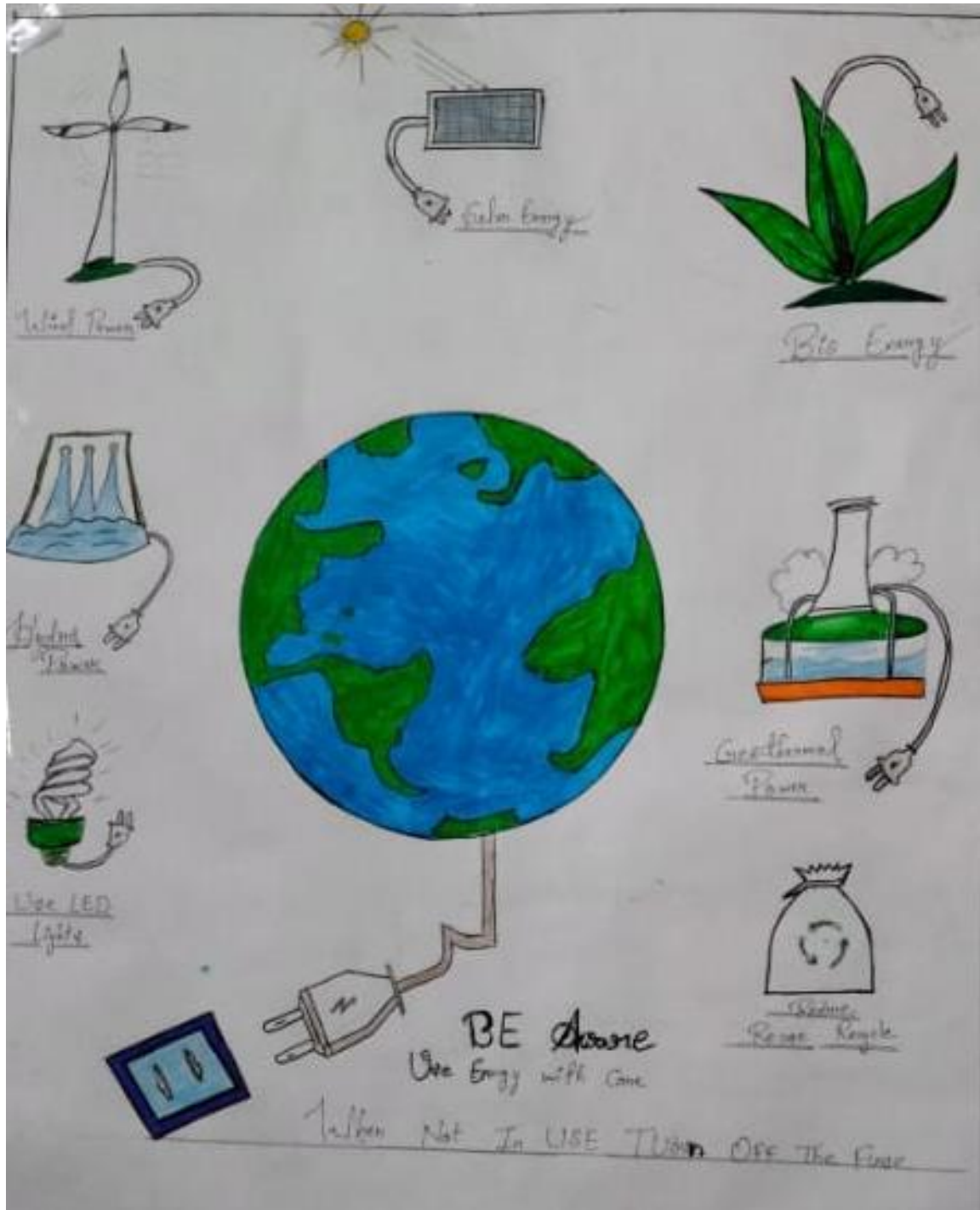
# GOVT. POSTGRADUATE COLLEGE, GUNA

Affiliated to Jiwaji University, Gwalior (M.P.)

Phone No.: 07542-251641

Email : hepgcgun@mp.gov.in

Website : <https://pgcollegeguna.in/>





# GOVT. POSTGRADUATE COLLEGE, GUNA

Affiliated to Jiwaji University, Gwalior (M.P.)

Phone No.: 07542-251641

Email : hepgcgun@mp.gov.in

Website : <https://pgcollegeguna.in/>







## 2. Management of the various types of degradable and non-degradable waste

Solid and Liquid Waste of College being dumped separately





# GOVT. POSTGRADUATE COLLEGE, GUNA

Affiliated to Jiwaji University, Gwalior (M.P.)

Phone No.: 07542-251641

Email : hegpgcgun@mp.gov.in

Website : <https://pgcollegeguna.in/>



## Vermicompost Unit



# GOVT. POSTGRADUATE COLLEGE, GUNA

Affiliated to Jiwaji University, Gwalior (M.P.)

Phone No.: 07542-251641

Email : [hepgcgun@mp.gov.in](mailto:hepgcgun@mp.gov.in)

Website : <https://pgcollegeguna.in/>



## 3. WATER CONSERVATION







## 4. Green campus initiatives

One Day Seminar on “Environment Sustainability and Pollution Control” held on August 27, 2022 organised by Department Chemistry





# GOVT. POSTGRADUATE COLLEGE, GUNA

Affiliated to Jiwaji University, Gwalior (M.P.)

Phone No.: 07542-251641

Email : hegpgcgun@mp.gov.in

Website : <https://pgcollegeguna.in/>



## No Vehicle Day



# GOVT. POSTGRADUATE COLLEGE, GUNA

Affiliated to Jiwaji University, Gwalior (M.P.)

Phone No.: 07542-251641

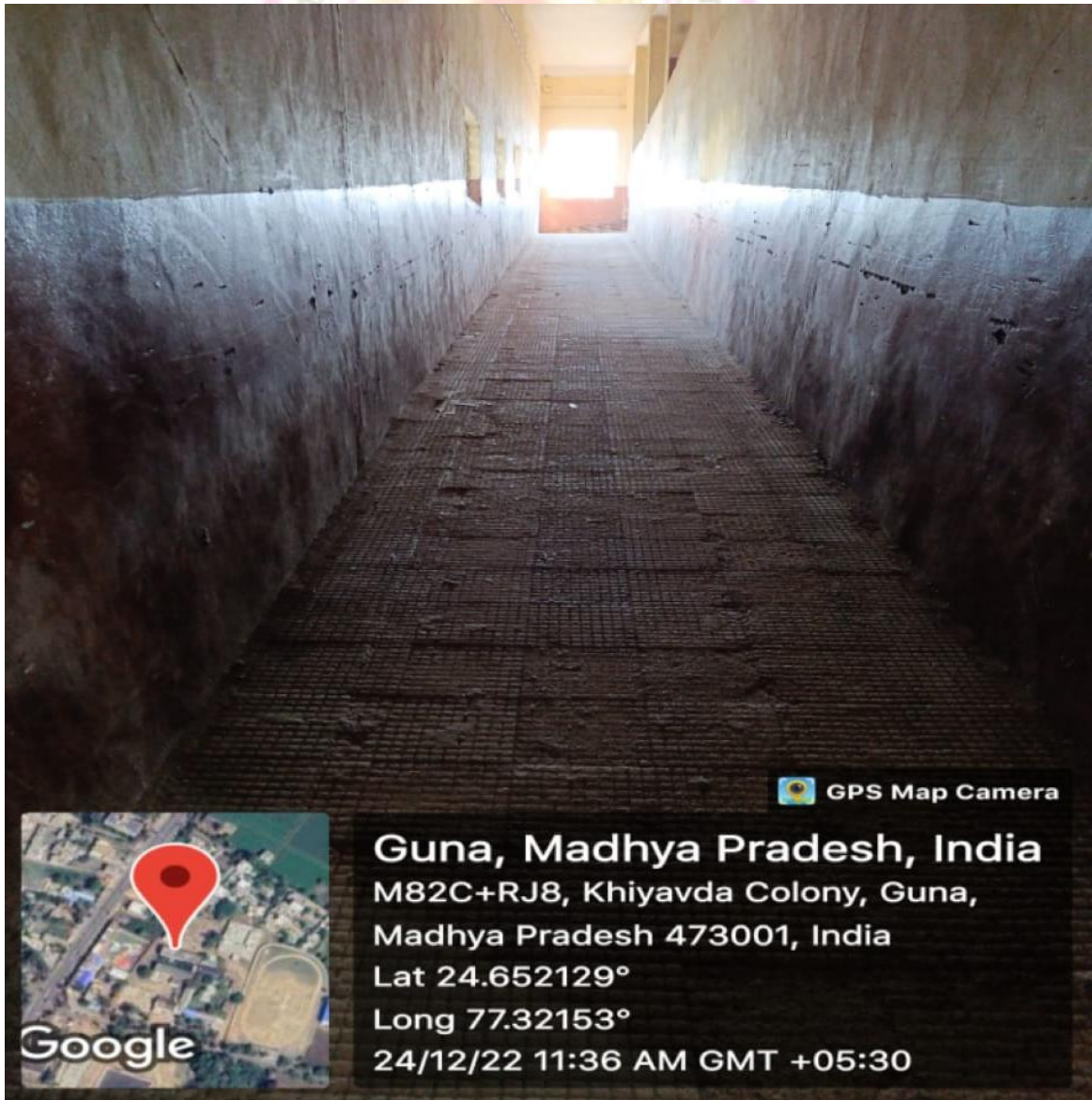
Email : hegpgcgun@mp.gov.in

Website : <https://pgcollegeguna.in/>



## 5. Disabled-friendly, barrier free environment

### Ramp for Divyangjan





# GOVT. POSTGRADUATE COLLEGE, GUNA

Affiliated to Jiwaji University, Gwalior (M.P.)

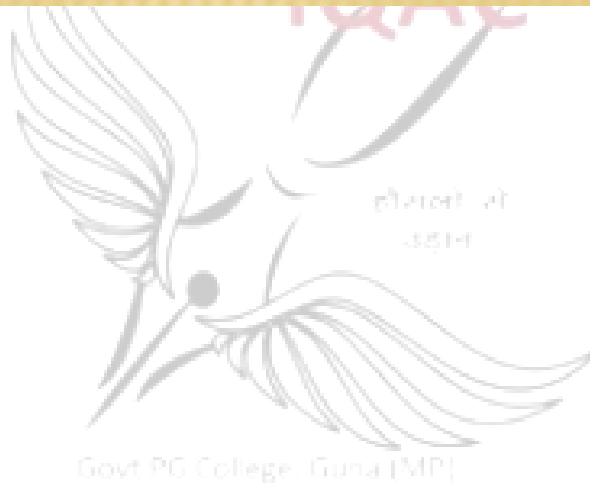
Phone No.: 07542-251641

Email : [hepgcgun@mp.gov.in](mailto:hepgcgun@mp.gov.in)

Website : <https://pgcollegeguna.in/>



**Toilets for disabled students**





# GOVT. POSTGRADUATE COLLEGE, GUNA

Affiliated to Jiwaji University, Gwalior (M.P.)

Phone No.: 07542-251641

Email : [hepgcgun@mp.gov.in](mailto:hepgcgun@mp.gov.in)

Website : <https://pgcollegeguna.in/>



GPS Map Camera

Guna, Madhya Pradesh, India

Madho Roa Scindia Marg, M82C+PQ6, in-front of Jain residence,  
Khiyavda Colony, Guna, Madhya Pradesh 473001, India

Lat 24.651679°

Long 77.321988°

22/11/23 02:34 PM GMT +05:30

Google